



PANORAMIC

WEALTH MANAGEMENT LIMITED

Cashflow Wizard

Our job is to look to make sure you don't run out of money in retirement.

At Panoramic Wealth Management we use state-of-the-art modelling tools to help you to better understand your financial landscape and the journey you are about to take.

From information you provide about current expenditure The Truth™ Financial Planning software illustrates how much money you will have [or not have], and when you may run out of money in retirement from predicted expenditure.

Therefore allowing you to understand your own position and plan in advance in ensure you enjoy your future journey.

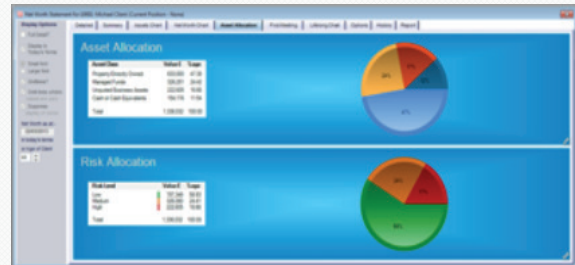
In our experience people tend to underestimate their expenditure – SOME BY A LONG WAY!

Example screens:

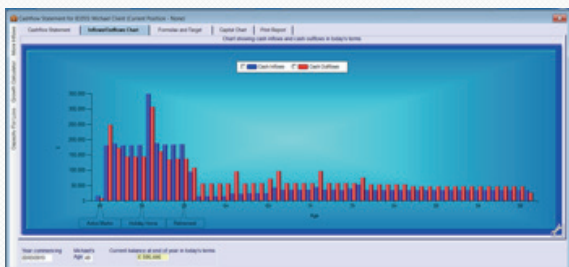
Educational Expenses



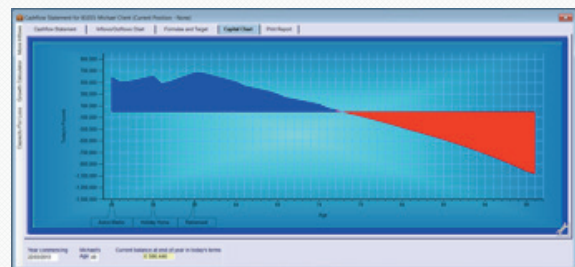
Net Worth by Asset Allocation



Income Statement



Cashflow Statement



The tool has calculated when this person will most likely run out of money.

To learn more about how Panoramic Wealth Management can help you complete your Personal Wealth journey call us now on 01892 559 555 or email us at journey@panoramicwealth.co.uk

panoramicwealth.co.uk